

**SKYLINE**  
GROUP

**EQUIPMENT.**  
**BUILT SMART.**  
**BUILT SAFE.**



19896 Hwy 7, Perth, ON K7H 3C9  
[www.skylinegroupintl.com](http://www.skylinegroupintl.com) | +1 877 417 6336

**SKYLINE**  
GROUP



# CROSSOVER BRIDGE



## MATERIALS

All componentry and accessories manufactured from high-grade structural aluminum with options for powder coating.

## COMPLIANCE

Crossover Bridge Systems are designed and manufactured in accordance with your requirements.

## FEATURES & BENEFITS

- No galvanizing or paint required
- Rust-proof
- Easy assembly
- Anti-slip walkway
- Short fabrication time
- Flat pack shipping
- Modular
- Built to on-site measurement

## CHOOSE WHICH SUITS YOUR NEEDS BEST.

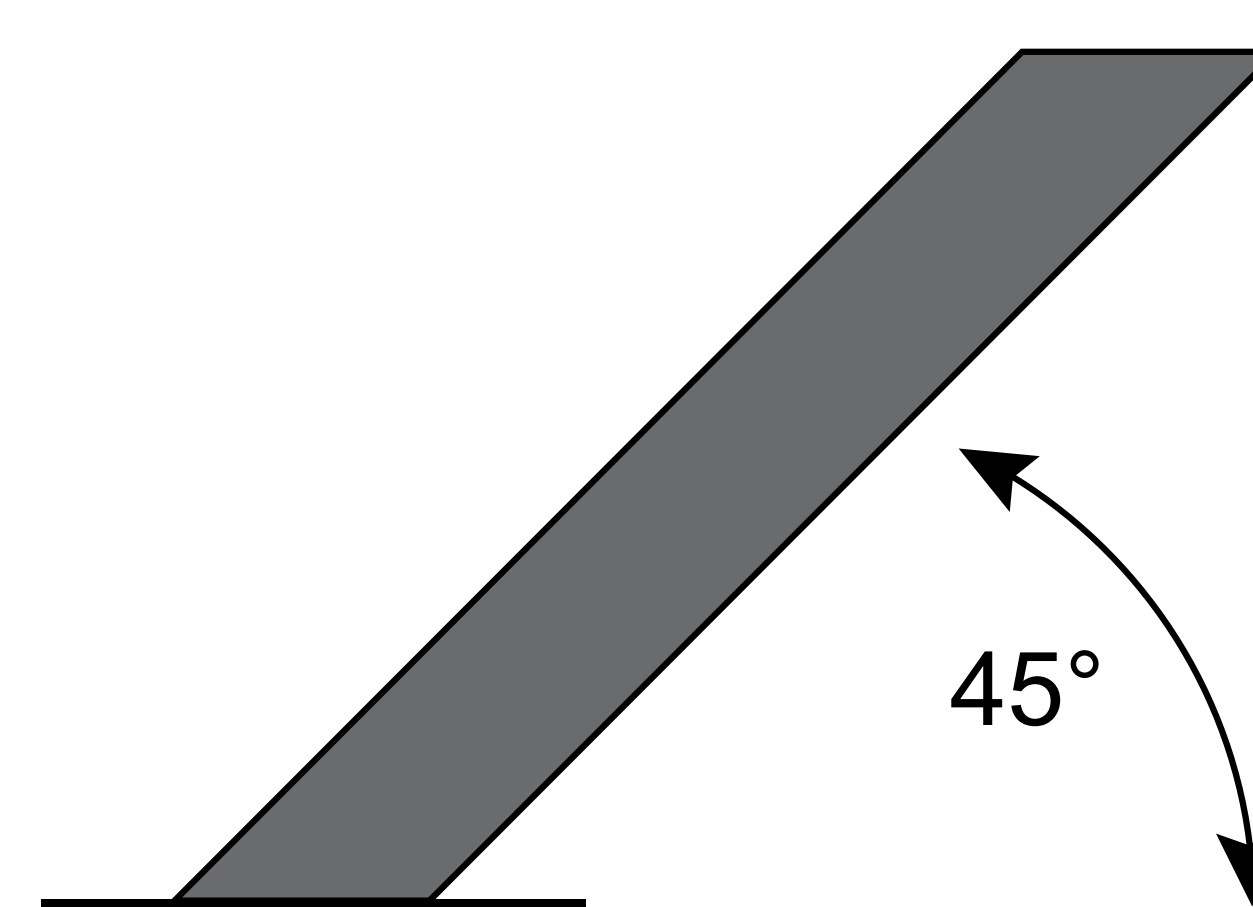
Regular stair ladder rungs are 10" wide and angled at 45 degrees, while ship ladder rungs are 4" wide and angled at 65 degrees. Each style can be interchanged on crossover bridges.

## USES

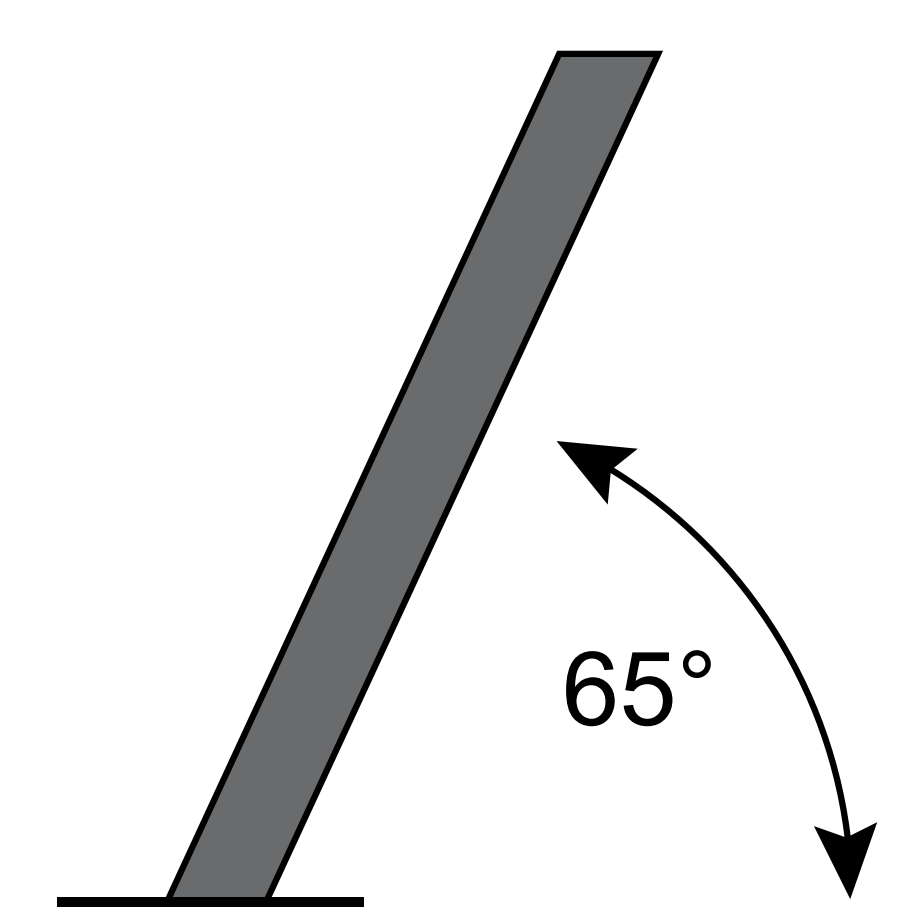
Easily and safely cross over roof obstructions such as:

1. Cable trays & ducts
2. Changes in roof elevations
3. Gaps between buildings

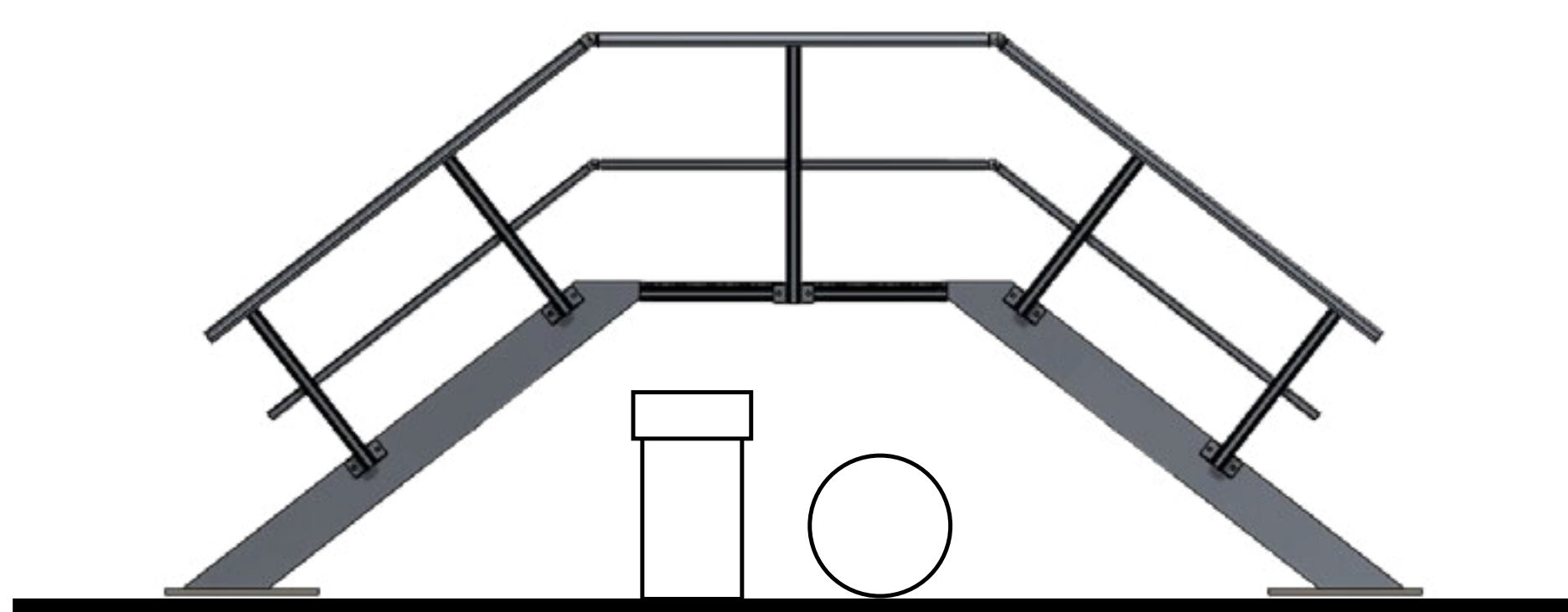
Stair



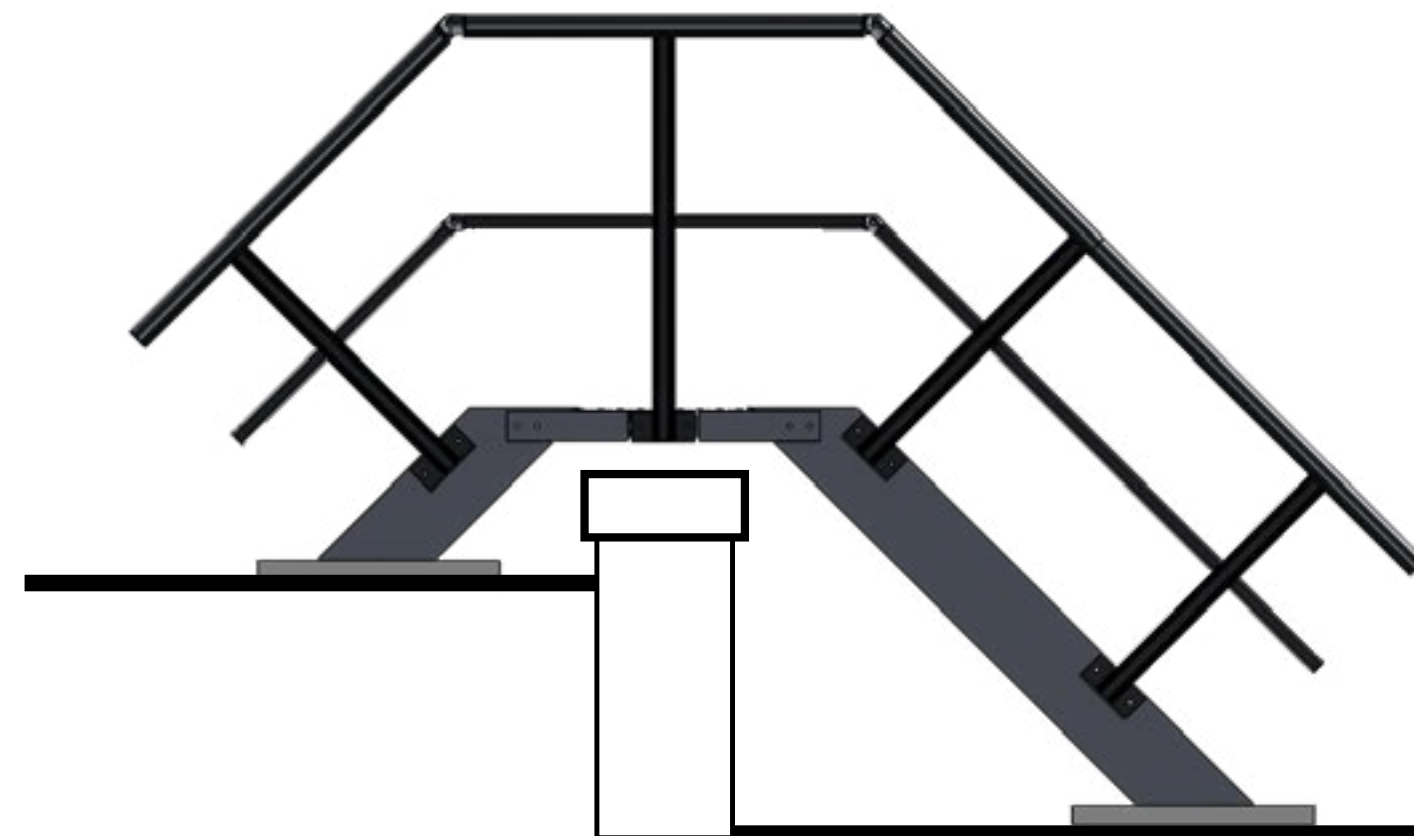
Ships Ladder



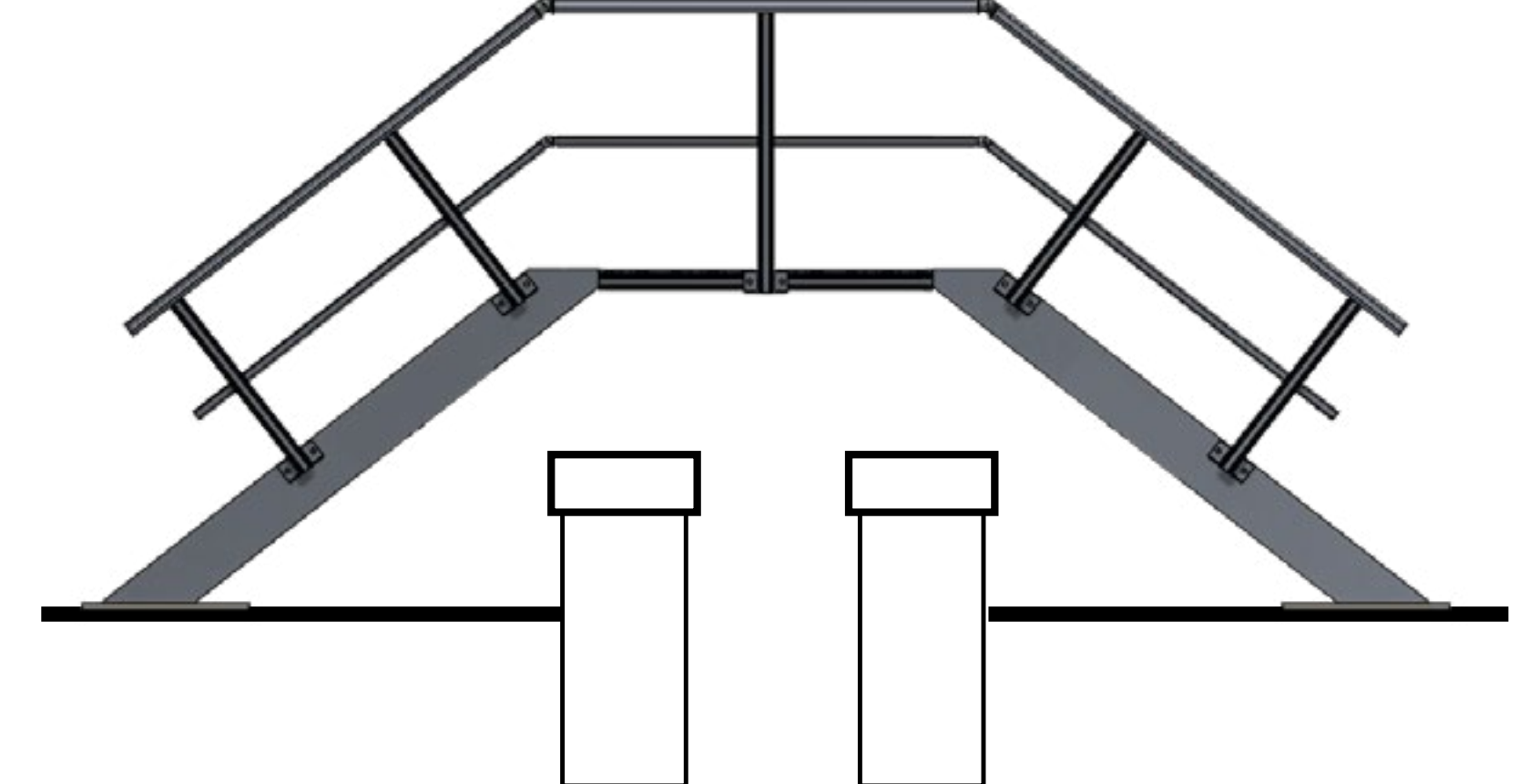
1.



2.



3.



Sold by: